



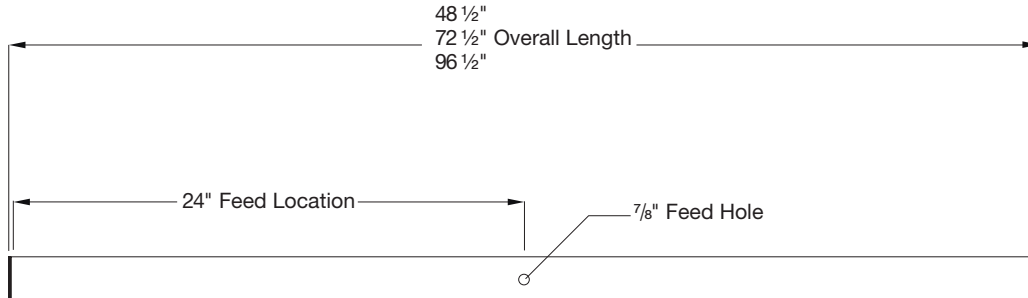
FORUM

SMALL BODIED CORINTHIA
WALL MOUNT
ADA COMPLIANT

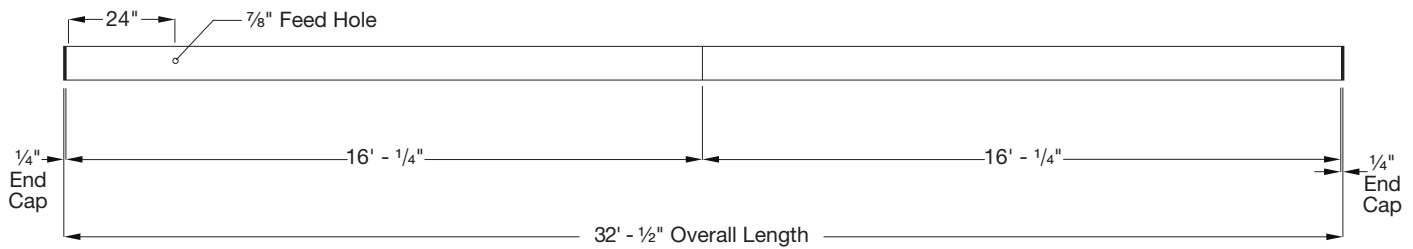


MOUNTING/ ACCESSORIES

Individual Fixtures

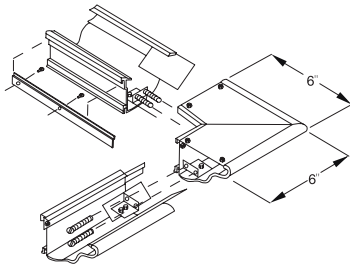


Typical Run



*Lamping options may require more than one power feed location. consult factory

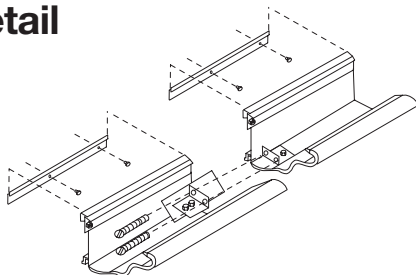
Corners



Corners

All CORINTHIA corners are hand fabricated from extruded aluminum. The corners are all welded for strength and hand finished for a smooth and seamless appearance. Custom corners are available to accommodate specific room dimensions. Consult factory.

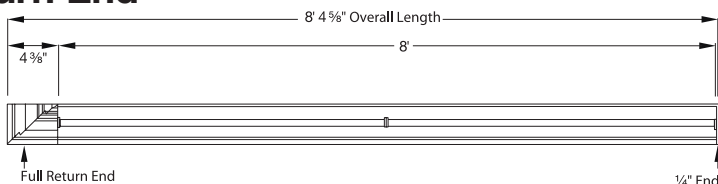
Mounting Detail



Mounting Detail

The CORINTHIA series fixture can be edge mounted using the "EZ" mounting rail. Simply mount the rail level to the correct elevation first. Then hang the fixture on the "EZ" rail and complete the supply wire connection. The "EZ" rail simplifies the installation process.

Return End



Return Ends

The Corinthia Series can be specified with a return end on the right side only, a return end on the left side or return ends on both sides. The full return ends shall be mitered, welded and ground smooth for a soft, continuous appearance. Each return end adds 4 3/8" to the fixture length. Shown at left with a full return end on the left side.