



FORUM LEGACY WALLMOUNT

FB-1-39-VOLTAGE-EL-FINISH
FB-2-39-VOLTAGE-EL-FINISH
FB-3-39-VOLTAGE-EL-FINISH
FB-1-40-VOLTAGE-EL-FINISH
FB-2-40-VOLTAGE-EL-FINISH
FB-3-40-VOLTAGE-EL-FINISH

DESCRIPTION:

The **FORUM/LEGACY** series achieves a new level of quality in direct/indirect lighting using state-of-the-art technology in compact fluorescent lamps and electronic ballasts.

The **LEGACY** is a shallow profile lighting fixture constructed of extruded aluminum with a downlight lens and designed as a companion fixture to the **LEGACY** Pendant. The lens is wedge shaped and fabricated from white translucent acrylic, pressure formed for the sharp, crisp detail necessary to compliment the **LEGACY** quality.

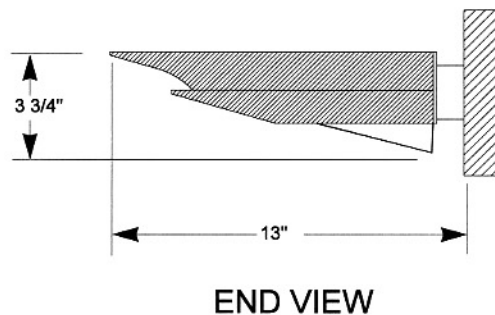
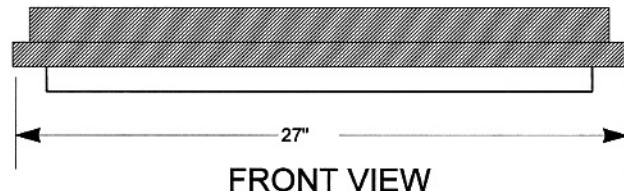
The **LEGACY** is not only aesthetically attractive; but highly functional based on its luminaire efficiency of 69%. The **LEGACY** is available in either a one (1), two(2) or three (3) lamp version with choice of either F39 or F40 compact fluorescent lamps, depending on the ambient lighting requirements. Standard finish is white textured painted finish with white acrylic lens. Other painted finishes and lens colors are available.

APPLICATIONS:

General Office Areas, Conference Rooms, Lobbies, Executive Offices, CRT Areas and as a companion fixture to the **LEGACY** Pendant.

MOUNTING HEIGHTS:

The **FORUM/LEGACY** wall mount should be mounted a minimum of 80 inches above floor level in accordance with THE AMERICANS WITH DISABILITIES ACT (ADA).



SPECIFICATIONS:

FIXTURE BODY: Shall be constructed of .090 inch thick 6063-T5 extruded aluminum. The fixture body shall be 27" wide, 13" deep and 3 3/4" high when using F40 or F39 lamps. All corners shall be mitered, welded, filled and ground smooth with no visible corner seams. The upper and lower frame assemblies shall be factory-joined with mechanical fasteners that are not visible after installation. The fixture body shall contain a female connector for ease of wiring to the ballast compartment assembly.

REFLECTOR: Shall have a minimum reflectivity of 85% with a specular surface finish. The reflector shall disperse the light for even illumination of the ceiling and subtle lighting of the acrylic lens.

MOUNTING BRACKET ASSEMBLY: Shall be fabricated from 18 gauge CRS and painted to match the finish of the fixture body. Two (2) 5/16 inch diameter holes shall be provided for attachment of the mounting bracket to the wall structure. The mounting bracket assembly shall be provided with a male electrical connector for ease of wiring with the fixture body assembly.

LAMPS: By others, shall be one (1), two (2) or three (3) lamp combination of either F39 or F40 type compact fluorescent. The lamps shall be positioned on a horizontal plane and rotated about the horizontal axis for optimum light distribution.

BALLAST: Shall be a single 1-lamp, 2-lamp or 3-lamp electronic suitable for use with either F39 or F40 compact fluorescent lamps. The ballasts shall be pre-wired with a female electrical connector for ease of wiring to the pendant assembly.

FINISH: Mounting bracket assembly and fixture body shall be finished with a textured white semi-gloss polyurethane enamel. Optional painted finishes are available.

PRODUCT LISTING: Shall be U.L. listed.