

FORUM LUXTRO

JOB _____

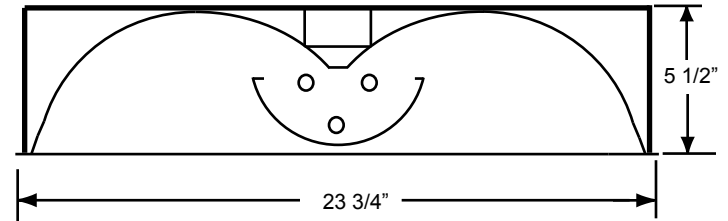
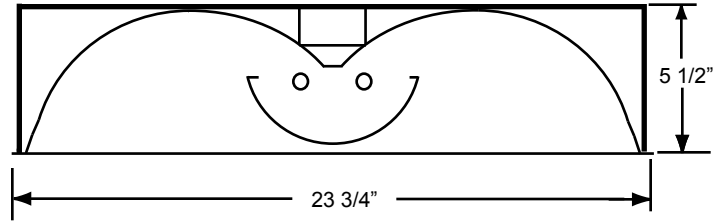
TYPE _____

DESCRIPTION: The **FORUM/LUXTRO** is a recessed indirect/direct lighting system designed to provide diffused, even illumination for today's office environment. Luxtro's smooth, die-formed reflector system consistently provides high reflectivity and excellent efficiency with minimal brightness.

APPLICATIONS: Designed to complement contemporary offices. Ideally suited for offices with low ceiling heights.

MOUNTING: **FORUM/LUXTRO** can be installed in Narrow Slot Grid ceilings.

SPECIAL FEATURES: Decorative, diffused lighting for today's offices. Shielded lamp image. Minimal reflection on computer screens, minimal shadowing. Competitively priced alternative to suspended linear indirect luminaires and parabolic troffers. Versatile lighting system, available with Perf Basket, Radial Baffle Basket, or Cross Baffle Basket.



| LUXTRO SERIES | Size | Shielding | | Finish | | |
|--|------------|---|---|---------------------------------------|---|---|
| | 2x2 2x4 | PCB=Perf Center Basket RBCB=Radial Baffle Center Basket CBCB=Cross Baffle Center Basket | | WH=White CC=Custom | | |
| LXTH | - | - | - | - | - | - |
| Center Basket Recessed Narrow Grid Mount 2x2 or 2x4 | | Lamping 0303=2 T5 Lamps 0303H=2 T5HO Lamps 0505=2 T8 Lamps 240=2 F40BX Lamps 250=2 F50BX Lamps 255=2 F55BX Lamps | 1313=3 T5 Lamps 1313H=3 T5HO Lamps 1515=3 T8 Lamps 340=3 F40BX Lamps 350=3 F50BX Lamps 355=3 F55BX Lamps | Voltage 120v 277v UNV | Typical Options EM1=550 Lumen EBP EM2=1100 lumen EBP F=Fusing AR=Air Return Only | |

SPECIFICATIONS:

The **FORUM/LUXTRO** housing is manufactured from die-formed 20 gauge CRS. Sockets shall be prewired and factory installed. Lamp image hidden by Perforated Shield, Radial Baffle Shield or Cross Baffle Shield, all with acrylic lens overlay. Fixture bodies available in 2'x2' and 2'x4'.

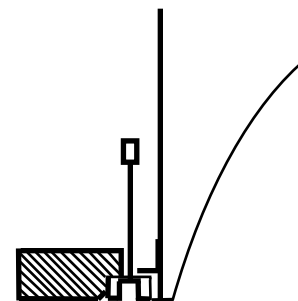
REFLECTOR: Reflector shall be die-formed, computer generated, manufactured from 20 gauge steel, finished in Optic White powder coat for maximum reflectivity.

BALLAST: Electronic High power factor with thermal protection.

PRODUCT LISTING: Shall be U.L./CUL listed for damp location.

CANDLEPOWER SUMMARY: Consult Factory for Test Report

Mounting Detail for Narrow Slot Grid



CONSULT FACTORY FOR PHOTOMETRIC DATA