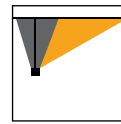




JOB \_\_\_\_\_

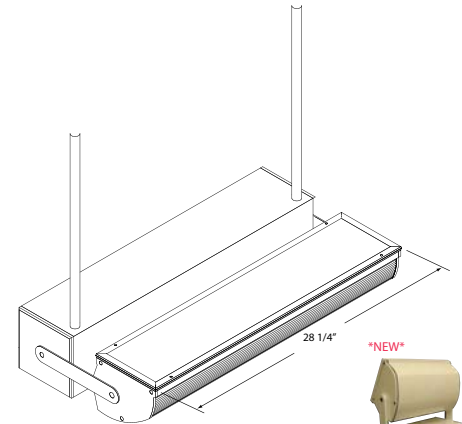
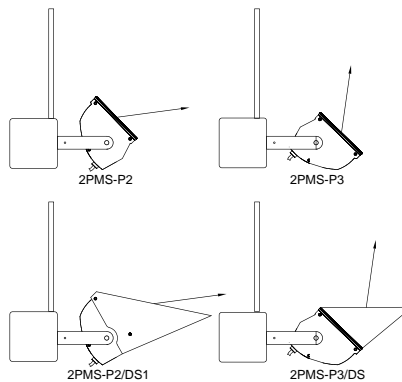
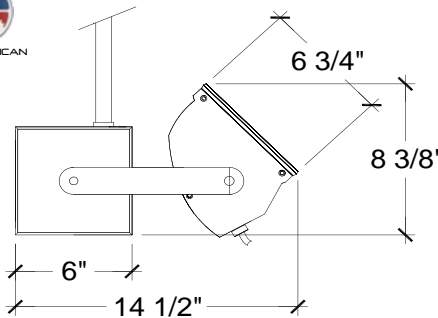
FIXTURE TYPE \_\_\_\_\_



**LARGE BODY QUASAR**  
 AIM-ABLE ASYMMETRIC HID  
 2 LAMP HEAD PENDENT MOUNTED  
 INTEGRAL BALLAST  
 INDOOR/OUTDOOR USE



**MOUNTING POSITIONS**



Smooth Housing

**ORDERING CODE**

|                                                                                                                 |                                                                    |                                               |                                                                                                                                                                                                                                                     |                                                   |                                               |                                                                               |                                                                                                                                                                                                                      |                                                                            |                                                                                                                                                                                                                                                                                                                         |
|-----------------------------------------------------------------------------------------------------------------|--------------------------------------------------------------------|-----------------------------------------------|-----------------------------------------------------------------------------------------------------------------------------------------------------------------------------------------------------------------------------------------------------|---------------------------------------------------|-----------------------------------------------|-------------------------------------------------------------------------------|----------------------------------------------------------------------------------------------------------------------------------------------------------------------------------------------------------------------|----------------------------------------------------------------------------|-------------------------------------------------------------------------------------------------------------------------------------------------------------------------------------------------------------------------------------------------------------------------------------------------------------------------|
| <b>Quasar</b><br><u>Asymmetric</u><br><u>Adjustable</u><br><u>Aluminum</u><br><u>HID Point</u><br><u>Source</u> | <b>Listing:</b><br>W = UL Wet Location<br>Blank = UL Damp Location | <b>Lamp Qty:</b><br>2 = 2 Lamp Single Housing | <b>Lamping*:</b><br>70MH = 70Watt MH<br>100MH = 100Watt MH<br>150PS = 150Watt MH<br>175PS = 175Watt MH<br>250PS = 250Watt MH<br>320PS = 320Watt MH<br>350PS = 350Watt MH<br>400PS = 400Watt MH<br>39CMH = T6 CMH<br>70CMH = T6CMH<br>150CMH = T6CMH | <b>Style:</b><br>2NS = Integral ballast No Shroud | <b>Voltage:</b><br>120 = 120 V<br>277 = 277 V | <b>Finish:</b><br>WH = White (Standard)<br>CC = Custom Color<br>AZ = Anodized | <b>Optics REF/LENS:</b><br>SA = Satin Anodized (Standard)<br>SP = Specular Aluminum<br>SH = Specular Hammertone<br>/FG = Frosted Micro Prism Glass (Standard)<br>/CG = Clear Glass<br>/SG = Solite Micro Prism Glass | <b>Mounting:</b><br>PMS = Pendant Mount<br>Single Head<br>xx = Stem Length | <b>Options:</b><br>DS = Front Deflector<br>DS1 = Rear Deflector<br>PDS = Front Perf Deflector<br>PDS1 = Rear Perf Deflector<br>EM-Q = Quartz Restrike<br>DIM = Dimming**<br>NAT = Natatorium<br>F = Fusing<br>P2 = Mounting Position 2<br>P3 = Mounting Position 3<br>SH = Smooth Housing<br>MOD = Custom Modification* |
| QUA -                                                                                                           | [ ] -                                                              | 2 -                                           | [ ] -                                                                                                                                                                                                                                               | 2NS -                                             | [ ] -                                         | [ ] -                                                                         | [ ] -                                                                                                                                                                                                                | PMSxx -                                                                    | [ ]                                                                                                                                                                                                                                                                                                                     |

\* Consult Factory  
 \*\* Specify Manufacturer

**SPECIFICATION**

**FIXTURE BODY:** Shall be .125" thick extruded 6063 -T5 aluminum with external surface ribbing for improved heat dissipation which will prolong lamp life. The standard finish for the housing is white. The end plates shall be .375" thick aluminum, gasketed and mechanically attached to the housing. The ends shall be painted white (standard).

**LENS AND FRAME:** Damp location fixture utilizes a one piece cast frame secured to the housing by four (4) captive screws, with a 0.125" thick high temperature frosted patterned tempered glass (standard). Wet location fixtures utilize a mitered extruded aluminum frame that is gasketed and secured to the housing by four (4) captive screws. The frame shall be white powder coat to match the housing.

**REFLECTOR:** Shall be bright dip anodized multifaceted pre-focused aluminum (standard).

**BALLAST HOUSING:** Shall be fabricated from .090" aluminum, and finished in a white powder coat to match the housing

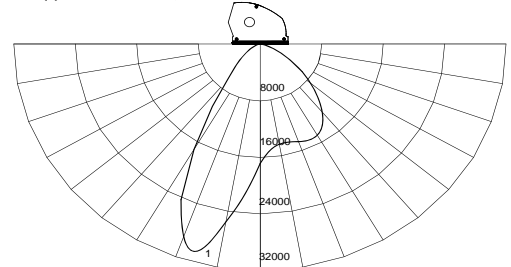
**DEFLECTOR SHIELDS:** Shall be fabricated from 18 gauge steel. The shields shall be die formed, welded, and ground smooth to provide a seamless finished appearance. Standard finish shall be white powder coat to match housing. Custom finishes available.

**MOUNTING BRACKET:** Shall be die formed from 18 gauge C.R.S.. Standard finish is white to match the housing.

**PRODUCT LISTING:** Shall be U.L. for damp location, wet location available. All product manufactured in an IBEW union facility

**PERFORMANCE**

IES INDOOR REPORT BAL No.10614.MOD2  
 PHOTOMETRIC FILENAME : QUA-2-400MH-1CM-FROSTED LENS.IES  
 LAMP (2)MH400/U/ED28 36,000 LUMENS SPECULAR REFLECTOR



Maximum Candela = 31762 Located At Horizontal Angle = 180, Vertical Angle = 15  
 # 1 - Vertical Plane Through Horizontal Angles (180 - 0) (Through Max. Cd.)

| Zonal Lumen Summary                |       | Zone  | Lumens | %Lamp | %Fixt |
|------------------------------------|-------|-------|--------|-------|-------|
| 0                                  | 16762 | 0-30  | 16557  | 23.0  | 40.8  |
| 15                                 | 15582 | 0-40  | 26186  | 36.4  | 64.5  |
| 30                                 | 14370 | 0-60  | 37735  | 52.4  | 93.0  |
| 45                                 | 13196 | 0-90  | 40587  | 56.4  | 100.0 |
| 60                                 | 11752 | 0-180 | 40587  | 56.4  | 100.0 |
| Total Luminaire Efficiency = 56.4% |       |       |        |       |       |