

# FORUM

## QUASAR/PROJECTOR SLIPFITTER MOUNT

JOB \_\_\_\_\_

TYPE \_\_\_\_\_

### FORUM QUASAR/PROJECTOR SERIES

The **QUASAR/PROJECTOR** is a heavy duty, integrally ballasted floodlight with a high degree of beam control. The optics are designed to evenly illuminate either vertical or horizontal surfaces.

**APPLICATIONS:** Classrooms, Office Areas, Libraries, Lobbies, Retail Stores.

**MOUNTING:** The **QUASAR/PROJECTOR** can be floor, parapet, ceiling, or wall mounted.

### SPECIFICATION:

**HOUSING:** Shall be .125" thick extruded 6063 -T5 aluminum with external surface ribbing for improved heat dissipation which will prolong lamp life. The standard finish for the housing is white. The end plates shall be .375" thick aluminum, gasketed and mechanically attached to the housing. The ends shall be painted white (standard). Custom finishes and bright dip anodize finish available. Consult factory.

**LENS AND FRAME:** Shall be .125" thick high temperature clear patterned tempered glass. The extruded aluminum frame shall be gasketed and secured to the housing by four (4) captive screws. An internal stainless steel wire leader shall be tethered to the frame to facilitate relamping. The frame shall be white (standard).

**REFLECTOR:** Shall be highly polished, multi-faceted prefocused anodized aluminum.

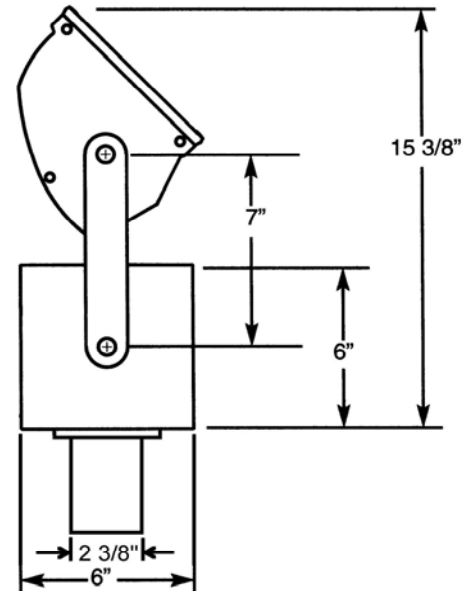
**MOUNTING:** Standard Slipfitter 2 3/8" for mounting to poles, bullhorns, etc.

**BALLAST HOUSING:** Shall be .090" thick 6061-T5 aluminum with a white painted finish.

**BALLAST:** For lamp wattages from 70-175W, shall be integrally mounted, encased and potted, HPF, CWA with a B sound rating. The ballast shall be integrally mounted core and coil, HPF, CWA and thermally protected for lamp wattages from 250-400W.

**PRODUCT LISTING:** Shall be U.L. and C.S.A. listed for Damp Location.

**PATENT PENDING:** The housing contours of the luminaire constitute a trademark of Forum, Inc.



Overall Fixture Length: 28 1/4"

Quasar/ Projector Series		Number of Lamps	Integral Ballast Slipfitter Mount	Finish WH=White CC=Custom	Options
QUA	W	2	2SF		
W=Wet Location		Indicates Watage 70MH 175PS 100MH 250PS 175MH 320PS 250MH 350PS 400MH 400PS		Voltage 120v 277v	DS=Deflector Shield CBB=Cross Blade Baffle RBT=Remote Ballast Tray EM-Q=Quartz Restrike EM-S=Quartz Socket WL=With Lamp F=Fusing