



# FORUM

## QUASAR/PROJECTOR RADIUS SHROUD

JOB \_\_\_\_\_

TYPE \_\_\_\_\_

### FORUM QUASAR/PROJECTOR SERIES

The **QUASAR/PROJECTOR** is a heavy duty, integrally ballasted floodlight with a high degree of beam control. The optics are designed to evenly illuminate either vertical or horizontal surfaces.

**APPLICATIONS:** Classrooms, Office Areas, Libraries, Lobbies, Retail Stores.

**MOUNTING:** The **QUASAR/PROJECTOR** can be floor, parapet, ceiling, or wall mounted.

#### SPECIFICATION:

**HOUSING:** Shall be .125" thick extruded 6063 -T5 aluminum with external surface ribbing for improved heat dissipation which will prolong lamp life. The standard finish for the housing is white. The end plates shall be .375" thick aluminum, gasketed and mechanically attached to the housing. The ends shall be painted white (standard). Custom finishes and bright dip anodize finish available. Consult factory.

**LENS AND FRAME:** Shall be .125" thick high temperature clear patterned tempered glass. The extruded aluminum frame shall be gasketed and secured to the housing by four (4) captive screws. An internal stainless steel wire leader shall be tethered to the frame to facilitate relamping. The frame shall be white (standard).

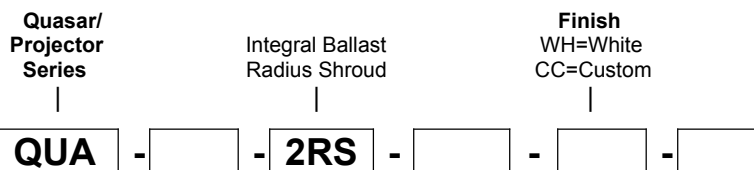
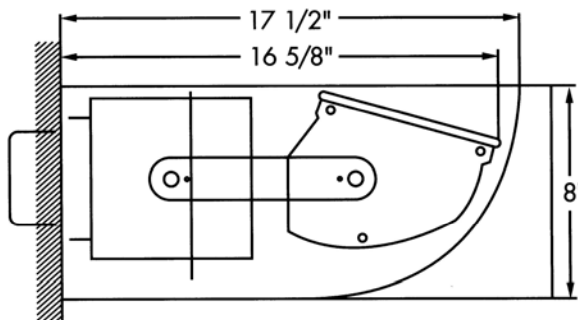
**REFLECTOR:** Shall be highly polished, multi-faceted prefocused anodized aluminum.

**BALLAST HOUSING:** Shall be .090" thick 6061-T5 aluminum with a white painted finish.

**BALLAST:** For lamp wattages from 70-175W, shall be integrally mounted, encased and potted, HPF, CWA with a B sound rating. The ballast shall be integrally mounted core and coil, HPF, CWA and thermally protected for lamp wattages from 250-400W.

**PRODUCT LISTING:** Shall be U.L. and C.S.A. listed for Damp Location.

**PATENT PENDING:** The housing contours of the luminaire constitute a trademark of Forum, Inc.



**Lamp Watage**

70MH	175PS
100MH	250PS
175MH	320PS
250MH	350 PS
400MH	400 PS

**Voltage**

120v
277v

**Options**

- DS=Deflector Shield
- CBB=Cross Blade Baffle
- RBT=Remote Ballast Tray
- EM-Q=Quartz Restrike
- EM-S=Quartz Socket
- WL=With Lamp
- F=Fusing

\*70WMH TD-6  
\*150WMH TD-7 \* N/A with Fusing and Quartz Restrike

### CANDLEPOWER SUMMARY

**CATALOG NO:** QUA-175MH-2-WM  
**LAMP TYPE:** M175/C/U/MED  
**LUMENS:**10750  
**FIXTURE EFFICIENCY:** 66.6  
**LUMINAIRE WATTS:**205  
**TEST REPORT NO:** 9642.0

ANGLE	CANDELA
180	1313
175	1521
165	2182
155	2903
145	3462
135	3276
125	2691
115	2104
105	1503
95	923
90	717
85	514
75	201
65	22
55	0
45	0
35	0
25	0
15	0
5	0
0	0

