



# FORUM

## QUASAR / PROJECTOR

### COVE MOUNT

JOB \_\_\_\_\_

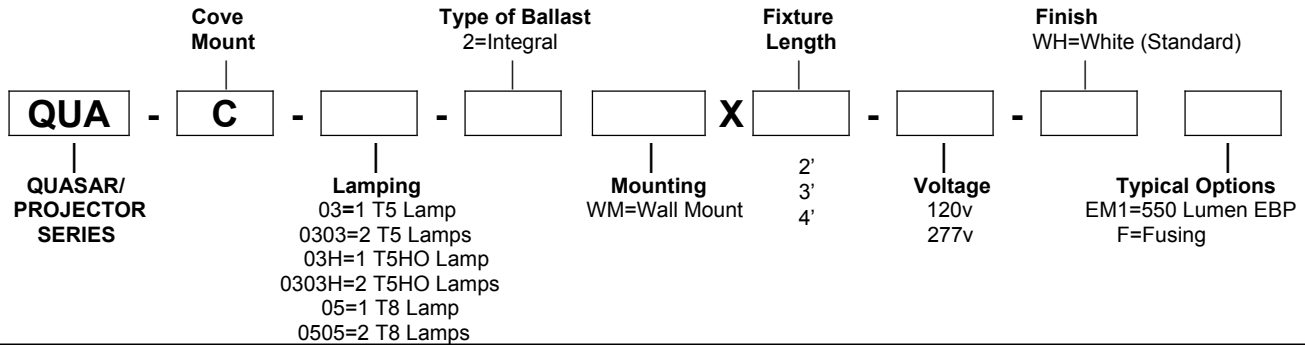
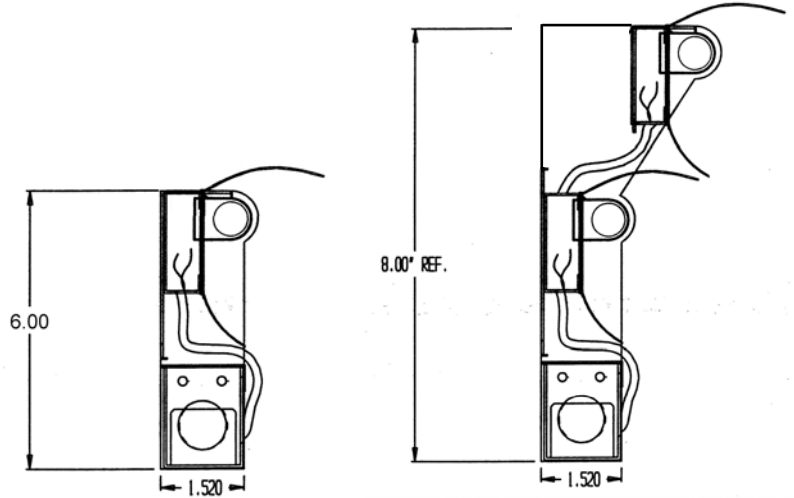
TYPE \_\_\_\_\_

#### FORUM QUASAR/PROJECTOR SERIES

The **QUASAR/PROJECTOR** is a cove mount luminaire with a high degree of beam control. The optics are designed to evenly illuminate horizontal surfaces.

**APPLICATIONS:** Office Areas, Libraries, Lobbies, Atriums.

**MOUNTING:** The **QUASAR/PROJECTOR** is designed to be mounted in a cove and provide even illumination across the ceiling surface.



#### SPECIFICATION:

**HOUSING:** Shall be die formed from cold rolled steel sheet. The standard finish for the housing is white.

**REFLECTOR:** Shall be highly polished, multi-faceted prefocused anodized aluminum, with asymmetrical distribution.

**PRODUCT LISTING:** Shall be U.L. listed for damp location.