

LED

INVERSE COVE BY FORUM LIGHTING

A fully integrated vertical curtain cove system which creates a straight, clean curtain wall grazing cove every time in every space. **Inverse Cove** is a 4" x 6" housing with a specifiable ceiling aperture. Extruded profile provide maximum aesthetic impact and provides seamless intergeneration of Luminaire into the hard architecture. Unequaled uniform performance is obtained utilizing Forums patented field tailorable adjustable LED technology, achieving continuous, even wall illumination without hot spots, dim spots, or black outs. **Inverse Cove** accommodates the latest in LED technology.

LAMPING OPTIONS
AT A GLANCE:

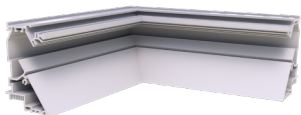


JOB: _____ TYPE: _____

ORDERING CODE

MOUNTING		LAMPING		SHIELDING	LENGTH		VOLTAGE	FINISH	INFILL PANEL		OPTION 1	OPTION 2	OPTION 3
W Wall	65 650 lm/ft 7.3 input watts/ft*	27 2700k temp 93.5% special order option	CFA Clear Frosted Acrylic lens	2 2'	3 3'	120V	PR Primer	4 4"	6 6"	ADJ Adjustable (see adden- dum)	F Fusing	90 CRI 90 CRI	
				4 4'	5 5'				9 9"				NONE
C Ceiling	95 950 lm/ft 10.6 input watts/ft*	30 3000k temp 95.2%	UNV Universal	6 6'	7 7'	UNV Universal	WH White	Custom infill panel widths available *See Profile and Mounting		EC Emergency Circuit	EMLED LED Battery Pack		
				8 8'	XX Specify run length in even foot in- crements. Round run dimensions to next whole foot increment. System can be tailored to field conditions at time of insulation			SV Silver	DIMMING OPTIONS:				
		35 1100 lm/ft 12.3 input watts/ft*	40 4000k temp 100%				CC Custom Color Provide custom color RAL#:	D10V 0-10V dimming 1% power class	DLA2 Lutron Hi-lume 1% 2-wire LED driver (120V forward phase only)	DLA3 Lutron Hi-lume 1% 3-wire LED driver	DLA5 Lutron Hi-lume 1% EcoSystem LED driver	DLEH5 Lutron Hi-lume 1%-H EcoSys- tem LED driver with soft-On, Fade-to-Black	DLE55 Lutron 5-Series EcoSystem LED driver
		*assumes 4000k w/ satin lens Lumen Multiplier = % of 4000K Consult factory for limitations						DALI Digitally Addressable Lighting Interface	DIM Dimming Please specify dimming manufacturer/model (if required)				
		System Power Draw: 65LEDxx = 6.5W/ft 95LEDxx = 10.6W/ft 110LEDxx = 12.3W/ft											

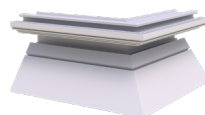
OPTIONAL ACCESSORIES



X

Quantity

90° INSIDE CORNER: 1' x 1'



X

Quantity

90° OUTSIDE CORNER: 1' x 1'



X

Quantity

LEFT ENDCAP

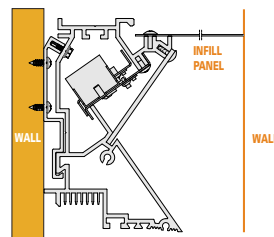
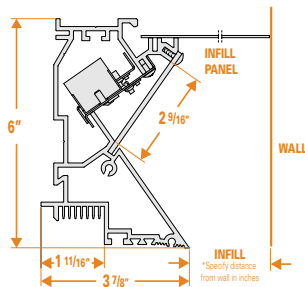


X

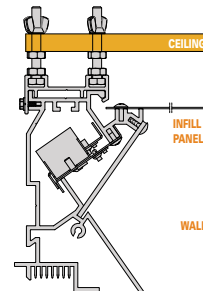
Quantity

RIGHT ENDCAP

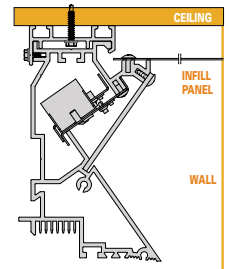
PROFILE AND MOUNTING



Wall Mount



Ceiling Mount A



Ceiling Mount B

SPECIFICATIONS

HOUSING 6063 T5 extruded aluminum profile approximately 2" x 6". Integrated features allow for seamless alignment over longer runs, easy installation and removal of geartrays and lens, and seamless integration into sheetrock construction.

SHIELDING Clear frosted lens rests in channel and clips into place.

GEARTRAY / REFLECTOR Integrated geartray and reflector made from 20 GA aluminum in a pre-paint white finish. Fully wired units remain completely accessible from below. Adjustable LED gear trays provide continuous light within any length installation.

DRIVER Provided with 0-10 volt dimming control- 1% power driver. 120V, 277V, and Universal Voltage available standard. Please consult factory for special driver requirements.

LISTING All fixtures bear an AFL-CIO/IBEW union label and are UL listed available with optional damp location rated. For alternative location configurations, please consult factory.

LED SYSTEM Forum utilizes a tunable LED system capable of supplying between 650-1100 lumens per foot. To specify specific lumen output other than standard 950 or 650, drop the last digit of the per foot lumen output desired, i.e. 400lm/ft. = 40LED35

* Forum reserves the right to change this information at any time. UPDATED 12/17/18