

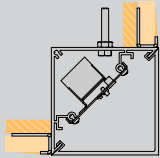


Architecture Meets Illumination

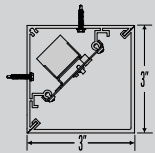
The Wedge fixture can provide a quiet wall wash or illuminate any corner feature to provide creative designs to any space. Forum offers this luminaire with its patented, field-adjustable housing and internal LED assembly, allowing for infinite, easy and precise field modifications while preserving uninterrupted, even illuminated lens surfaces.

WEDGE

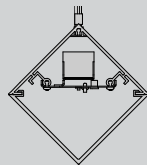
PRODUCT GUIDE



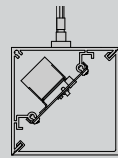
Mud In (FF)



Surface Mount (S)



Vertical Cable Mount (CV)



Horizontal Cable Mount (CH)



WEDGE



VERTICAL WEDGE



LED



ETL US

Intertek



For more information, or to download Cutsheets and IES files, visit www.forumlighting.com/wedge

To talk to a sales representative directly, call 412-781-5970 or email a team member below:

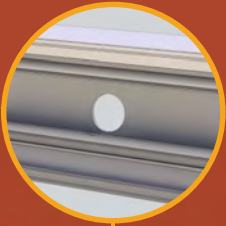
Inside Sales / Quotations: sales@forumlighting.com





EXPLORE THE SYSTEM

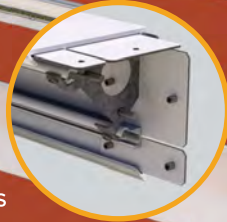
POWER FEED



JOINER BRACKET



ALIGNMENT TABS



Introducing WEDGE

The Wedge transforms the luminaire into an architectural feature. The unique bidirectional, 90-degree extruded white opal lens works to hide the extruded aluminum housing. This creates a beam of light that can run along any perpendicular transition, providing an illumination pattern while acting as a dynamic visual accent. Forum offers this fixture with a variety of mounting options to work for any project. We can provide the Wedge as a long continuous fixture, or a pattern with illuminated corners. The Wedge can be surface mounted at the transition of two perpendicular surfaces or cable hung in a rectangular orientation.

