



Customer Name	Date
Project Name	
Catalog Number	

Omnicove Series

The **Omnicove series by Forum** is a fully-integrated cove system, creating a straight, consistent and clean cove in every space. Omnicove is a modular system which can be used in a stand-alone application, in an optional profile housing, or as a retrofit for existing coves. Omnicove utilizes the latest in LED technology, optical lenses, and is available for use in wet locations.

Ordering

		LED													
		lm/ft	CCT												
HOUSING	OUTPUT	SHIELDING	LENGTH	VOLTAGE	FINISH	OPTION 1	OPTION 2	OPTION 3	OPTION 4						
OC Omnicove	SSM Saber Smooth Module	65 650 lm/ft 7.3 input watts/ft*	27 2700k temp 93.5%	CFA Clear Frosted Acrylic lens	1.5 20.25"	120V	WH White	EMLED LED battery pk	F Fusing						
OCW Omnicove Wet Location	SMM Saber Mud in Module*	95 950 lm/ft 10.6 input watts/ft*	30 3000k temp 95.2%	*Available for wet location module and tray options	2.5 32.25"	277V	SV Silver	90 CRI 90 CRI	EC Emergency Circuit						
	SST Saber Smooth Tray*	110 1100 lm/ft 12.3 input watts/ft*	35 3500k temp 96.8%	FTO Forward Throw Optic	3.5 44.25"	UNV Universal	BK Black	DIMMING OPTIONS (CHOOSE 1)							
	SMT Saber Mud in Tray*	40 4000k temp 100%		* Only available for housings utilizing modules	2.0 26.25"		PR Primer	D10V 0-10V dimming 1% power class	DLA2 Lutron Hi-lume 1% 2-wire LED driver (120V forward phase only)	DLEH5 Lutron Hi-lume 1%-H EcoSystem LED driver with Soft-On, Fade-to-Black					
	M Module			* Not available for wet location	3.0 38.25"		CC Custom Color Provide custom color RAL#:	DLA5 Lutron Hi-lume 1% EcoSystem LED driver	DLEH5 Lutron Hi-lume 1%-H EcoSystem LED driver with Soft-On, Fade-to-Black	DIM Dimming Please specify dimming manufacturer/model (if required)					
	* Not available for wet location				4.0 50.25"			CONTROLS OPTIONS (CHOOSE 1)							
	* Assumes 4000k w/ satin lens				XX Specify run length in even foot increments. Round run dimensions to next whole foot increment. System can be tailored to field conditions at time of insulation			LVP Lutron - Vive power pak	C110 Casambi (1x 010v)						
	Lumen Multiplier = % of 4000K							C210 Casambi (2x 010v)	CRGBW Casambi (RGBW)						
	Consult factory for limitations														
	System Power Draw:														
	65LEDxx = 6.5W/ft														
	95LEDxx = 10.6W/ft														
	110LEDxx = 12.3W/ft														

- 1 60 option available with 40 Fixture Length only
- 2 90 option available with 60 Fixture Length only
- 3 A2 option available with 80 Fixture Length only
- 4 10ft aircraft cables with gripples and hourglass sleeves pre-installed. Canopy kits ordered separately
- 5 G2 option available with 60 Fixture Length and 90 Lumen Output options only
- 6 10ft Power Cord included. 300V 18AWG, 5-Conductor wire
- 7 Powercord not required for G2 mounting option



Customer Name	Date
Project Name	
Catalog Number	

CONTROLS & SENSORS

Ordering Code	Description
LVP	Lutron - Vive power pak
C110	Casambi (1x 010v)
C210	Casambi (2x 010v)
CRGBW	Casambi (RGBW)

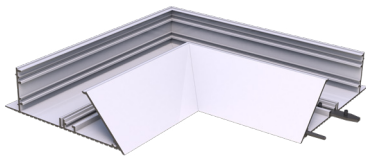
LUMEN MULTIPLICATION TABLE

Ordering Code	Description

DIMMING OPTIONS

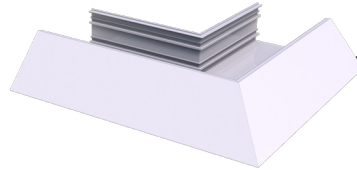
Ordering Code	Description
D10V	0-10V Dimming, 1% power class
DLA2	Lutron Hi-lume 1% 2-lire LED driver (120V forward phase only)
DLA3	Lutron Hi-lume 1% H EcoSystem LED driver with soft-On, Fade-to-Black
DLA5	Lutron Hi-lume 1% EcoSystem LED driver
DLEH5	Lutron Hi-lume 1% H EcoSystem LED driver with soft-On, Fade-to-Black
DLE55	Lutron 5-Series EcoSystem LED driver
DALI	Digitally Addressable Lighting Interface
DIM	Custom Dimming. Please specify dimming manufacturer/model

2. OPTIONAL ACCESSORIES



90° INSIDE CORNER

x
Quantity

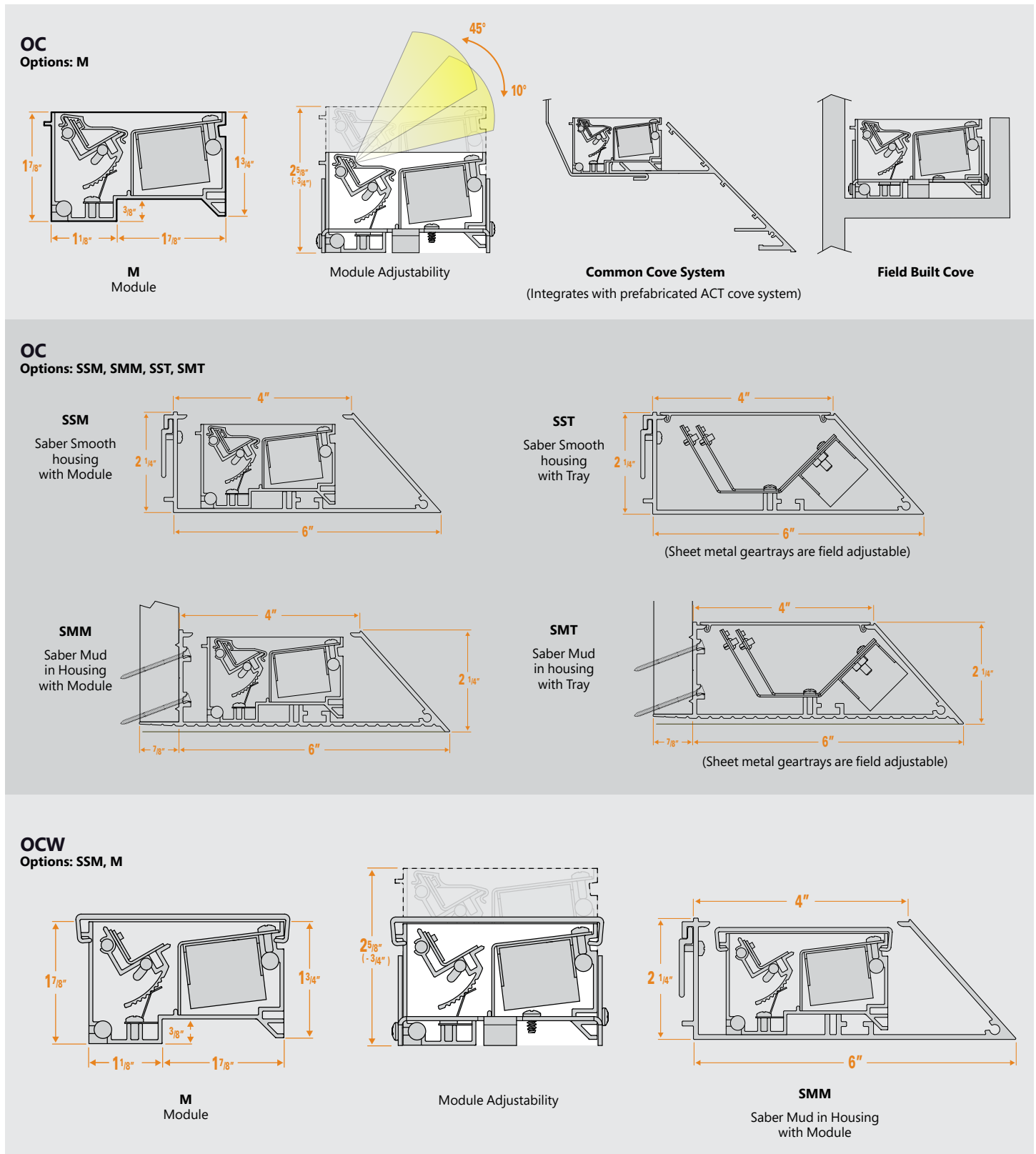


90° OUTSIDE CORNER

x
Quantity

* Custom angles available
Corner only available for Saber Smooth
and Saber Mud in housings

Drawings

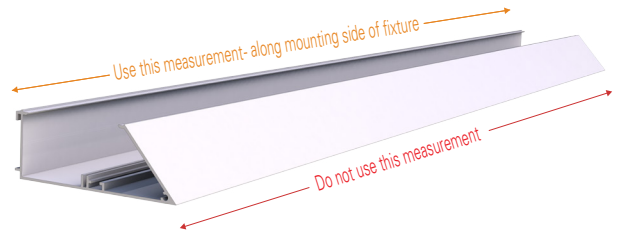
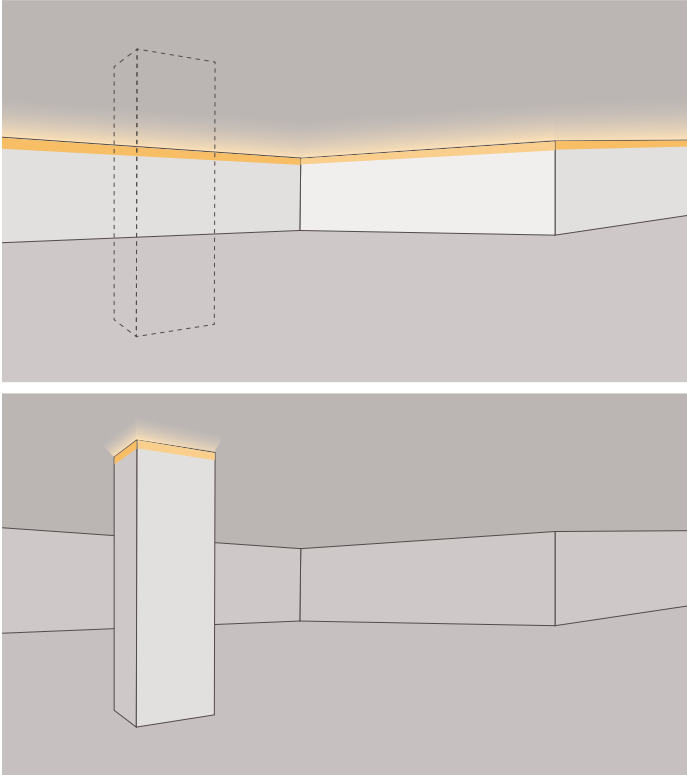




Customer Name	Date
Project Name	
Catalog Number	

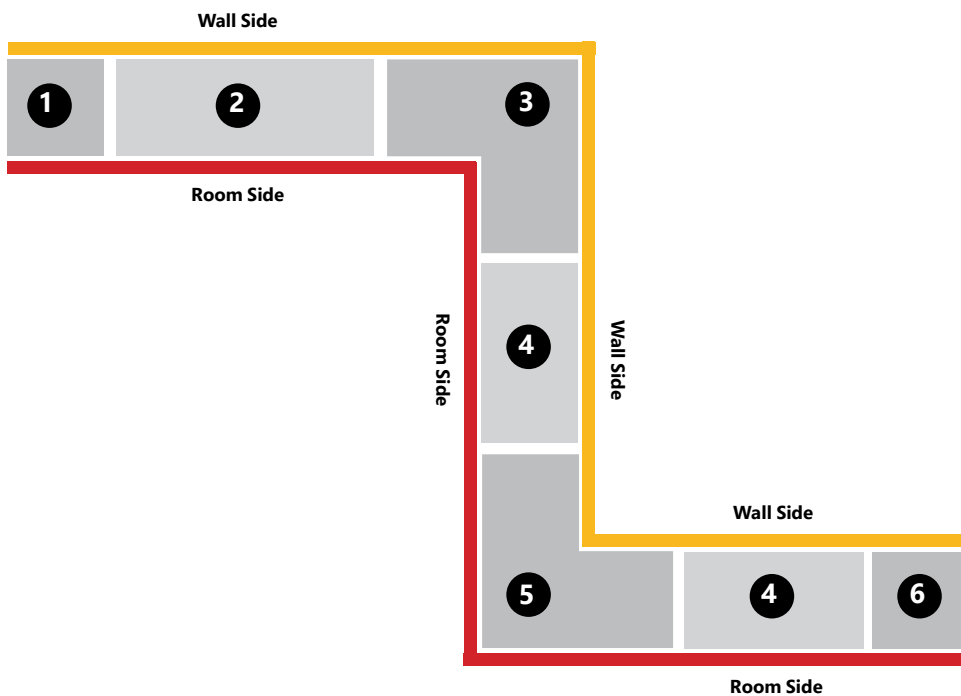
Housing Detail

OBTAINING PROPER RUN LENGTH MEASUREMENTS



In order to achieve the proper run length measurement, be sure to use the dimension of total mounting surface.

EXAMPLE CONTINUOUS RUN SYSTEM PATTERN



Example Omnicove Housing Component List

To achieve the continuous run pattern seen at left, you will need:

- ① 1x Beginning of Run Endcap
- ② 1x Housing Kit
- ③ 1x Inside Corner
- ④ 2x Housing Kit
- ⑤ 1x 90° Outside Corner
- ⑥ 1x End of Run Endcap



Customer Name	Date
Project Name	
Catalog Number	

CONSTRUCTION

Housing:	Extruded aluminum, machined endcaps, optional housing profiles
Lens:	Clear frosted acrylic lenses.
Optical Assembly:	6063 T5 extruded aluminum. Fully wired units remain completely accessible from above.
Paint:	Primer, Black, White, Silver, Custom Color
Weight:	

OPTICAL SYSTEM

Lumens:	650-1100 lm/ft
Distribution:	adjustable angle optical assembly
Efficacy:	
Wattage:	7.3 - 12.3 watts/ft
CCT:	2700k, 3000K, 3500K, 4000K
CRI (Min):	90CRI
R9 (Min):	
Color Consistency:	
Luminance Uniformity:	

ELECTRICAL

Input Voltage:	120V, 277V, Universal Voltage
Input Frequency:	50/60Hz
Power Factor (PF):	
Total Harmonic Distortion (THD):	
Thermal Protection:	
Temperature / Humidity:	
Transient Protection:	
Electronic Vibration Testing:	

CONTROLS

Dimming:	0-10V 1% power class; Lutron Hi-lume 1% 2-wire LED driver; Lutron Hi-lume 1% 3-wire LED driver; Lutron Hi-lume 1% EcoSystem LED driver; Lutron Hi-lume 1%-H EcoSystem LED driver with soft-On Fade-to-Black; Lutron 5-Series EcoSystem LED driver; Digitally Addressable Lighting Interface; Custom Dimming
-----------------	---

AMBIENT TEMPERATURE

Product ID	Operating Temperature
LEL:	

LUMEN MAINTENANCE

Projected L85 per IES TM-21 at max 35°C

50,000 HR

PROFILES

- Saber
- Rectilinear

MOUNTING

- Integrated Cove Mounting
- Retrofit applications

RATINGS

- IP66 Wet Rated

For Product or Technical Questions:

E: INFO@FORUMLIGHTING.COM
T: +1 412 781 5970