

# Wedge Series

The **Wedge series by Forum** is a unique multi-illuminated plane fixture designed to be mounted either vertically or horizontally in 90 degree corner applications. Wedge provides a wide angle, uniform level of illumination and is designed to be used in any location where high levels of uniform lighting are required. An integrated EMBB option makes Wedge a stylish fixture for egress applications. Current's patented TriGain® phosphor delivers 90 CRI color quality at 80 CRI efficacy.

## Ordering

MOUNTING		OUTPUT		SHIELDING	LENGTH	VOLTAGE	FINISH	OPTION 1	OPTION 2	OPTION 3	OPTION 4
<b>WDG</b> — — <b>LED</b> — — <b>X</b> — — — — — — — — Im/ft CCT	<b>SC</b> Surface Ceiling	<b>65</b> 650 lm/ft 6.5 input watts/ft*	<b>27</b> 2700k temp <b>93.5%</b> Special order option	<b>WOL</b> White Opal Lens	<b>2</b> 2'	<b>120V</b>	<b>WH</b> White	<b>EC</b> Emergency Circuit		<b>ADJ</b> Field Adjustable	
	<b>SW</b> Surface Wall				<b>3</b> 3'	<b>277V</b>	<b>SV</b> Silver	<b>EMLED</b> LED battery pk		<b>F</b> Fusing	
	<b>CH</b> Cable Horizontal	<b>95</b> 950 lm/ft 9.5 input watts/ft*	<b>30</b> 3000k temp <b>95.2%</b>		<b>4</b> 4'	<b>UNV</b> Universal	<b>BK</b> Black	<b>90 CRI</b> 90 CRI			
	<b>CV</b> Cable Vertical				<b>5</b> 5'			<b>DIMMING OPTIONS (CHOOSE 1)</b>			
	<b>FF</b> Flange Free	* Assumes 4000k w/ satin lens  Lumen Multiplier = % of 4000K  Consult factory for limitations	<b>35</b> 3500k temp <b>96.8%</b>		<b>6</b> 6'			<b>CC</b> Custom Color  Provide custom color RAL#:	<b>D10V</b> 0-10V dimming 1% power class	<b>DLA2</b> Lutron Hi-lume 1% 2-wire LED driver (120V forward phase only)	
			<b>40</b> 4000k temp <b>100%</b>		<b>7</b> 7'				<b>DLA3</b> Lutron Hi-lume 1% 3-wire LED driver	<b>DLA5</b> Lutron Hi-lume 1% EcoSystem LED driver	
			<b>50</b> 5000k temp <b>103%</b>		<b>8</b> 8'				<b>DLEH5</b> Lutron Hi-lume 1%-H EcoSystem LED driver with Soft-On, Fade-to-Black	<b>DALI</b> Digitally Addressable Lighting Interface	
	System Power Draw: 65LEDxx = 6.5W/ft 95LEDxx = 10.6W/ft 110LEDxx = 12.3W/ft				<b>9</b> 9'			<b>DIM</b> Dimming: Please specify dimming manufacturer/model (if required)			
					<b>10</b> 10'						
					<b>11</b> 11'						
					<b>12</b> 12'						
					<b>PTRN</b> custom pattern*						
			Specify continuous run length:								
			Standard run length in even foot increments.								
			Units ordered as individual units cannot be joined in field to create runs.								
			* See pattern worksheet								

- 1 60 option available with 40 Fixture Length only
- 2 90 option available with 60 Fixture Length only
- 3 A2 option available with 80 Fixture Length only
- 4 10ft aircraft cables with grippers and hourglass sleeves pre-installed. Canopy kits ordered separately
- 5 G2 option available with 60 Fixture Length and 90 Lumen Output options only
- 6 10ft Power cord included. 300V 18AWG, 5-Conductor wire
- 7 Power cord not required for G2 mounting option

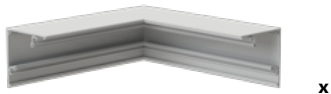
## CONTROLS & SENSORS

Ordering Code	Description
C110	Casambi (1x 010v)
C210	Casambi (2x 010v)

## DIMMING OPTIONS

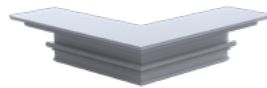
Ordering Code	Description
D10V	0-10V Dimming, 1% power class
DLA2	Lutron Hi-lume 1% 2-1ire LED driver (120V forward phase only)
DLA3	Lutron Hi-lume 1% H EcoSystem LED driver with soft-On, Fade-to-Black
DLA5	Lutron Hi-lume 1% EcoSystem LED driver
DLEH5	Lutron Hi-lume 1% H EcoSystem LED driver with soft-On, Fade-to-Black
DALI	Digitally Addressable Lighting Interface
DIM	Custom Dimming. Please specify dimming manufacturer/model

## 2. OPTIONAL ACCESSORIES



90° INSIDE  
CORNER: 1' x 1'

x

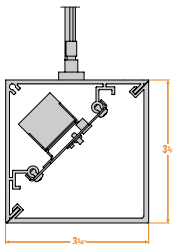


90° OUTSIDE  
CORNER: 1' x 1'

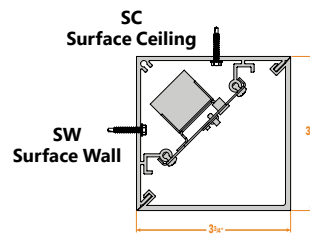
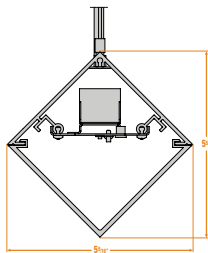
x

## MOUNTING

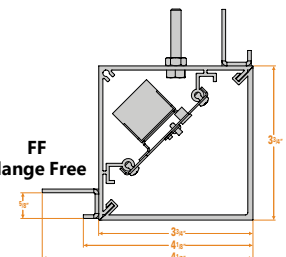
CH  
Cable  
Horizontal



CV  
Cable  
Vertical



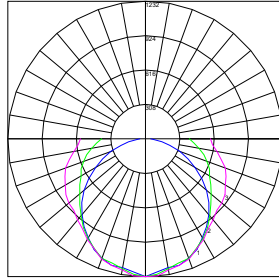
FF  
Flange Free



## Photometrics

### Logic/Config WEDGE

4435 Lumens  
WDG-CV-110LED40-WOL X  
4'-WH



Maximum Candela = 1231.53 Located At Horizontal Angle = 0, Vertical Angle = 0  
 # 1 - Vertical Plane Through Horizontal Angles (0 - 180)  
 # 2 - Vertical Plane Through Horizontal Angles (45 - 225)  
 # 3 - Vertical Plane Through Horizontal Angles (90 - 270)

ZONE	LUMENS	% OF FIXTURE
0-20	443.48	10.00
0-30	942.62	21.30
0-40	1548.69	34.90
0-60	2852.86	64.30
0-80	3999.19	90.20
0-90	4434.77	100.00

ZONE	LUMENS	% OF FIXTURE
10-90	4320.17	97.40
20-40	1105.21	24.90
20-50	1757.64	39.60
40-70	1916.2	43.20
60-80	1146.33	25.80
70-80	534.30	12.00
80-90	435.58	9.80
90-110	0.00	0.00
90-120	0.00	0.00
90-130	0.00	0.00
90-150	0.00	0.00
90-180	0.00	0.00
110-180	0.00	0.00
0-180	4434.77	100.00

## Performance Data Tables

The tables below shows the delivered lumens for the various lumen outputs. Use this chart in connection with the output multiplier capability to deliver any output required

### 4IN WEDGE

#### WDG: 4in RECESSED (DIRECT ONLY)

Distribution/Output	Lumens/Ft	W/Ft	Efficacy
D035	350	3.5	100
D040	400	3.9	103
D045	450	4.2	107
D050	500	4.6	109
D055	550	5.0	110
D060	600	5.5	110
D065	650	5.9	110
D070	700	6.3	111
D075	750	6.8	111
D080	800	7.2	111
D085	850	7.7	110
D090	900	8.2	110
D095	950	8.6	110
D100	1000	9.1	110
D105	1050	9.6	109
D110	1100	10.2	108
D115	1150	10.7	107
D120	1200	11.2	107
D125	1250	11.8	106
D130	1300	12.3	106
D135	1350	12.9	105
D140	1400	13.5	104

### OUTPUT MULTIPLIER TABLE

Photometrics and outputs published on this spec sheet are based on nominal 3500K temperature. This table may be used to approximate the lumen values at different Kelvin temperatures. Power consumption would stay the same.

CCT	80 CRI
3000K	0.98
3500K	1
4000K	1.03

## CONSTRUCTION

<b>Housing:</b>	Extruded aluminum, machined endcaps
<b>Lens:</b>	White opal lens
<b>Optical Assembly:</b>	.040" aluminum in a pre-paint white finish. Fully wired unit remains completely accessible from below via ballast panel.
<b>Paint:</b>	Black, White, Silver, Custom Color

## OPTICAL SYSTEM

<b>Lumens:</b>	950-1100 lm/ft
<b>Distribution:</b>	Direct
<b>Efficacy:</b>	CV: 111-119 LPW SW: 130-138 LPW (80CRI/40K)
<b>Wattage:</b>	6.5-9.5 watts/ft
<b>CCT:</b>	2700k, 3000K, 3500K, 4000K, 5000K
<b>CRI (Min):</b>	TriGain® 90CRI
<b>R9 (Min):</b>	65
<b>Color Consistency:</b>	2SDCM

## ELECTRICAL

<b>Input Voltage:</b>	120V, 277V, Universal Voltage
<b>Input Frequency:</b>	50/60Hz
<b>Power Factor (PF):</b>	>0.9
<b>Total Harmonic Distortion (THD):</b>	<16% - 120V <20% - 277V
<b>Temperature / Humidity:</b>	Suitable for Damp Locations
<b>Transient Protection:</b>	All Non-Lutron = 2.5KV Lutron = 4KV

## CONTROLS

<b>Dimming:</b>	0-10V 1% power class; Lutron Hi-lume 1% 2-wire LED driver; Lutron Hi-lume 1% 3-wire LED driver; Lutron Hi-lume 1% EcoSystem LED driver; Lutron Hi-lume 1%-H EcoSystem LED driver with soft-On Fade-to-Black; Lutron 5-Series EcoSystem LED driver; Digitally Addressable Lighting Interface; Custom Dimming C110 Casambi (1x 010v) C210 Casambi (2x 010v)
-----------------	---

## LUMEN MAINTENANCE

- L70>50K Hours

## MOUNTING

- SC - Surface Ceiling
- SW - Surface Wall
- CH - Cable Horizontal
- CV - Cable Vertical
- FF - Flange Free

## DESIGN LIFE & WARRANTY

- Warranty:**
- LED boards - 5 years
  - LED drivers (standard) - 5 years
  - LED drivers (Lutron) - 3 years



For Product or Technical Questions:

E: INFO@FORUMLIGHTING.COM  
T: +1 412 781 5970