



Customer Name	Date
Project Name	
Catalog Number	

Aquas Series

22

The **Aquas 22 series by Forum** is a line of extruded aluminum rectilinear luminaires approved for wet location, allowing for design consistency throughout wet and dry locations. Aquas features standard aperture sizes of 2, 3, 4, and 6". Multiple mounting configurations are available including rigid stem, surface as well as wall mounted. Aquas is available in Black, White, Silver, and custom colors and features a premium design, fit and finish. Current's patented TriGain® phosphor delivers 90 CRI color quality at 80 CRI efficacy.

Ordering

AQD — 22 —		LED											
		lm/ft	CCT										
DISTRIBUTION	PROFILE	OUTPUT		SHIELDING	MOUNTING	LENGTH	VOLTAGE	FINISH	OPTION 1	OPTION 2	OPTION 3		
AQD Direct	22 2" square	lm/ft	CCT	WOL White Opal Lens	H Stem Mount *	2 2'	120V	WH White	EMLED LED battery pk		SW Separate Switch		
		65 650 lm/ft 6.5 input watts/ft*	27 2700k temp 93.5% Special order option		S Surface Mount	3 3'	277V	SV Silver	EC Emergency Circuit		90 CRI 90 CRI		
		95 950 lm/ft 9.5 input watts/ft*	30 3000k temp 95.2%		W Wall Bracket Mount	4 4'	UNV Universal	BK Black	DIMMING OPTIONS (CHOOSE 1)				
		* Assumes 4000k w/ satin lens Lumen Multiplier = % of 4000K Consult factory for limitations	35 3500k temp 96.8%			* Spec. stem length:		5 5'	CC Custom Color Provide custom color RAL#:	D10V 0-10V dimming 1% power class	DLA2 Lutron Hi-lume 1% 2-wire LED driver (120V forward phase only)	DLEH5 Lutron Hi-lume 1%-H EcoSystem LED driver with soft-On, Fade-to-Black	
			40 4000k temp 100%		6 6'			DALI Digitally Addressable Lighting Interface		DIM Dimming: Please specify dimming manufacturer/model(if required)			
			50 5000k temp 103%		7 7'			CONTROLS OPTIONS (CHOOSE 1)					
			Custom Output					8 8'		LLXL Luton-Limelight wireless, external. 8-15ft AFF	LLXM Luton-Limelight wireless, external. >15-30ft AFF	LVS Lutron Vive integrated fixture sensor (occ+daylight)	
		LED lm/ft CCT			Spec. run length:								
					Standard run length in even foot increments.								
					Individual units cannot be joined in field to create runs.								

- 1 60 option available with 40 Fixture Length only
2 90 option available with 60 Fixture Length only
3 A2 option available with 80 Fixture Length only
- 4 10ft aircraft cables with grippers and hourglass sleeves pre-installed. Canopy kits ordered separately
5 G2 option available with 60 Fixture Length and 90 Lumen Output options only
- 6 10ft Power cord included. 300V 18AWG, 5-Conductor wire
7 Power cord not required for G2 mounting option



Customer Name	Date
Project Name	
Catalog Number	

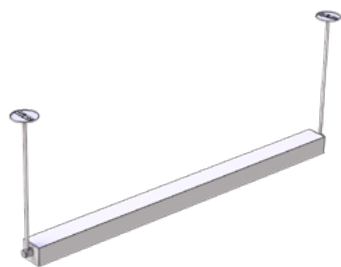
CONTROLS & SENSORS

Ordering Code	Description
LLXL	Luton-Limelight wireless, external. 8-15ft AFF
LLXM	Luton-Limelight wireless, external. >15-30ft AFF
LLXH	Luton-Limelight wireless, external. >30-40ft AFF

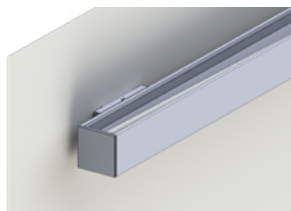
DIMMING OPTIONS

Ordering Code	Description
D10V	0-10V Dimming, 1% power class
DLA2	Lutron Hi-lume 1% 2-1ire LED driver (120V forward phase only)
DLEH5	Lutron Hi-lume 1% H EcoSystem LED driver with soft-On, Fade-to-Black
DALI	Digitally Addressable Lighting Interface
DIM	Custom Dimming. Please specify dimming manufacturer/model

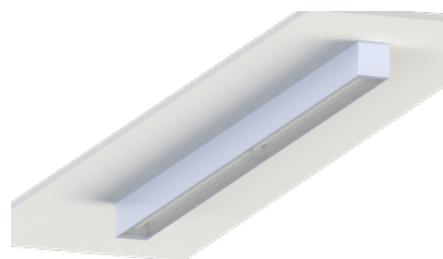
MOUNTING



H
Stem Mount



W
Wall Bracket Mount

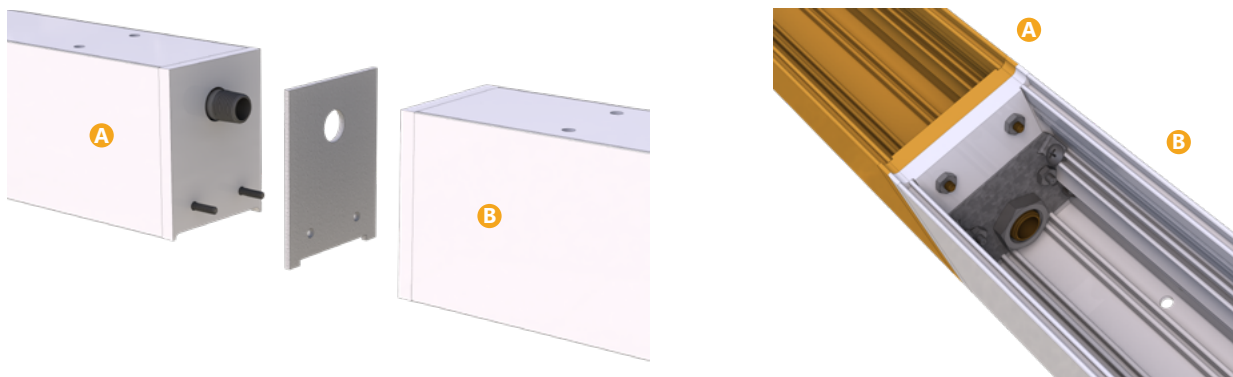


S
Surface Mount
(available in AQD only)



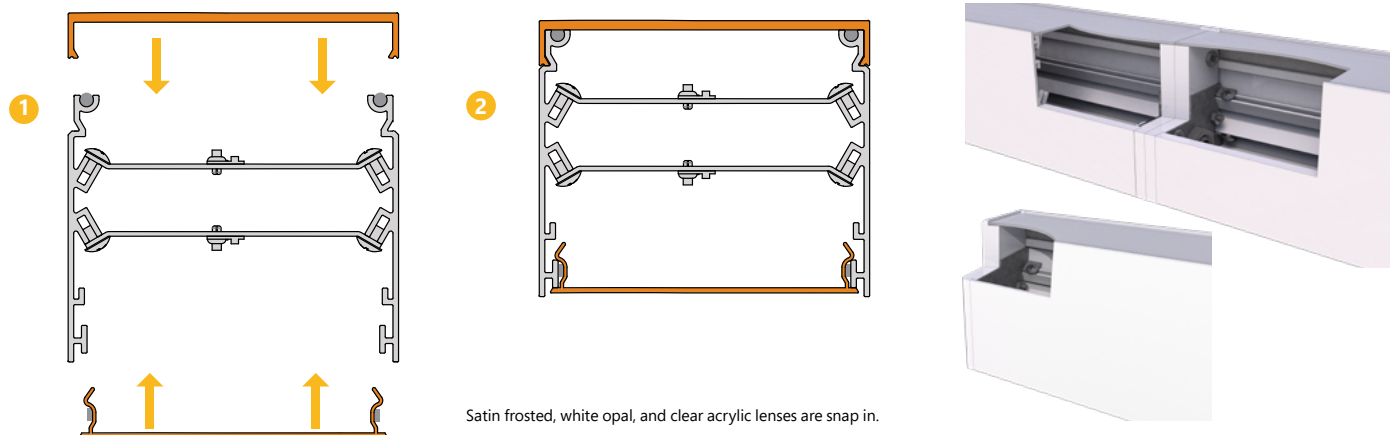
Components and Assembly

JOINING HARDWARE



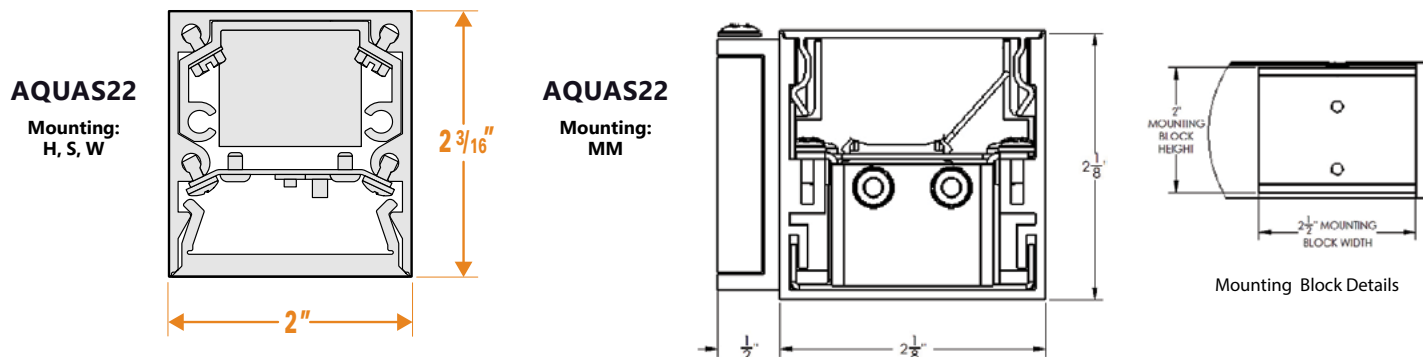
Shielding Options

LENS DETAIL



Drawings

PROFILE DRAWINGS





Customer Name	Date
Project Name	
Catalog Number	

CONSTRUCTION

Housing:	Extruded aluminum, machined endcaps
Lens:	White opal lenses
Optical Assembly:	18 GA cold rolled steel in a pre-paint white finish. Fully wired unit remains completely accessible from below via ballast panel.
Paint:	Black, White, Silver, Custom Color

OPTICAL SYSTEM

Lumens:	650-950 lm/ft
Distribution:	Direct (AQD)
Efficacy:	Up to 115 LPW
Wattage:	6.5 - 9.5 watts/ft
CCT:	2700k, 3000K, 3500K, 4000K, 5000K
CRI (Min):	TriGain® 90CRI
R9 (Min):	65
Color Consistency:	2SDCM

ELECTRICAL

Input Voltage:	120V, 277V, Universal Voltage
Input Frequency:	50/60Hz
Power Factor (PF):	>0.9
Total Harmonic Distortion (THD):	<16% - 120V <20% - 277V
Temperature / Humidity:	Suitable for Wet Locations
Transient Protection:	All Non-Lutron = 2.5KV Lutron = 4KV

CONTROLS

Dimming:	0-10V 1% power class; Lutron Hi-lume 1% 2-wire LED driver; Lutron Hi-lume 1%-H EcoSystem LED driver with soft-On Fade-to-Black; Lutron 5-Series EcoSystem LED driver; Digitally Addressable Lighting Interface; Custom Dimming
-----------------	--

OPERATING TEMPERATURE

Product	Operating Temperature
STD (Non-EM) Options	-30-25°C (-22-77°F)
2in w/Battery	10-25°C (50-77°F)

LUMEN MAINTENANCE

- L70>50K Hours

MOUNTING

- H - Stem Mount
- S - Surface Mount
- W - Wall Bracket Mount

RATINGS

- Wet Rated

DESIGN LIFE & WARRANTY

Warranty:

- LED boards - 5 years
- LED drivers (standard) - 5 years
- LED drivers (Lutron) - 3 years



For Product or Technical Questions:

E: INFO@FORUMLIGHTING.COM
T: +1 412 781 5970