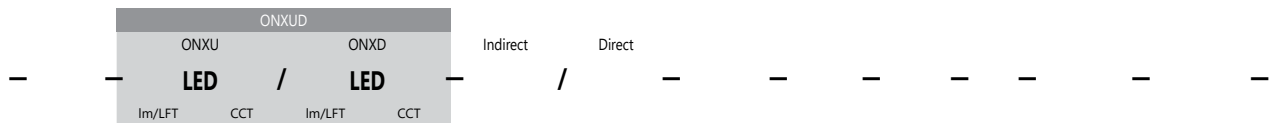


Onyx

3,4

Onyx pairs precision engineering with an all-black material palette, creating the ultimate minimalist tool for designers. Available in two form factors and a variety of mounting methods, Onyx features industry-leading quality of light and numerous options for length, lensing, mounting and controls and provides a premium custom fit and finish. Current's patented TriGain® phosphor delivers 90 CRI color quality at 80 CRI efficacy.

Ordering



DISTRIBUTION	PROFILE	OUTPUT		SHIELDING	SHIELDING	MOUNTING	LENGTH	VOLTAGE	FINISH	OPTION 1	OPTION 2	OPTION 3
ONXD Direct	43 2 15/16" width 4 3/4" height	95 95 lm/ft	27 2700k temp	CFA Clear Frosted Acrylic*	BOL Blackout Lens	H Stem Mount *	2 3'	120V	BK Black	MR¹ COB down light module	TriGain[®] 90 CRI² 90 CRI	DL Damp Location
ONXU Indirect	63 2 15/16" width 6 3/4" height	34, 44, 64: 3.7 input watts/ft*	1.07 Special order option.	SAT Satin Lens UP		C Cable Mount *	4 5'	277V		EMLED LED battery pk	SW Separate Switch	EC Emergency Circuit
ONXUD* Direct/Indirect	34 4 1/2" width 3 3/4" height	300 300 lm/ft	Not available with TriGain Technology. 90CRI only.	WOL White Opal Lens UP		S Surface Mount†	6 7'	347V		DIMMING OPTIONS (CHOOSE 1)		
* Not available on 33 or 34 profiles remote driver only	44 4 1/2" width 4 3/4" height	*Assumes ONXD-x4, 4000K w/ BOL lens	30 3000k temp	BWL Bat Wing Lens UP		W Wall Bracket Mount	8 9'	UNV Universal		D10V 0-10V dimming 1% power class	DLA2 Lutron Hi-Lume 1% 2-wire LED driver (120V forward phase only)	DLEH5 Lutron Hi-Lume 1%-H EcoSystem LED driver with soft-On, Fade-to-Black
	64 4 1/2" width 6 3/4" height	ONXD-x3 wattage multiplier 1.12	35 3500k temp	* Available in SAU only		10 11'	12 12'			DALI Digitally Addressable Lighting Interface	DMX DMX DMX512 / RDM	DIM Dimming: Please specify dimming manufacturer/model
		Wattage multiplier per CCT shown to right	40 1.00			* Spec. cable / stem length:				CONTROLS OPTIONS (CHOOSE 1)		
		Consult factory for limitations	50 5000k temp			† Available in ONXD (Direct) ONLY.				DPS Wattstopper daylight photo sensor	LVS Lutron Vive integrated fixture sensor (occ+daylight)	LVR Lutron Vive integrated fixture sensor (radio only)
		Custom Output				Standard run length in even foot increments.				OCC Wattstopper occupancy sensor	ELM Enlighted micro sensor	OES Osram SensiLLUM
		LED				Individual units cannot be joined in field to create runs.				OEC Osram Encellium CLM	OED Osram CLM DEXAL	C110 Casambi (tx 010v)
		34, 44, 64: 95-300 lm/ft				Patterns available, inquire with manufacturer.				C210 Casambi (2x 010v)	CRGBW Casambi (RGBW)	
		OR Replace LED Output With								DAINTREE[®] OPTIONS		
		RGBW								TQ Daintree [®] Networked Wireless Enabled for zonal control with WGS2100 (use with WOS3 ceiling sensor)	TS Daintree [®] Networked Wireless Enabled with WFA100 adaptor for zonal control (use with WOS3 ceiling sensor)	TZ Daintree [®] Networked Wireless with integrated WIZ20 sensor
		LED	temp							TT Daintree [®] EZ Connect Wireless with integrated WIZ20 sensor	T1 Daintree [®] One with integrated WIZ20 sensor with factory programmed preset*	

1 Consult factory for available COB configurations

2 TriGain available in 3000K, 3500K, and 4000K. Consult factory for maximum lumens per foot.

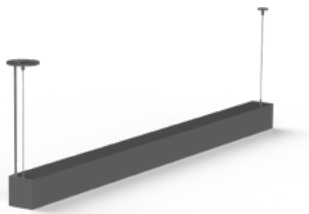
CONTROLS & SENSORS

Ordering Code	Description
OCC	Wattstopper occupancy sensor
DPS	Wattstopper daylight photo sensor
LVS	Lutron Vive integrated fixture sensor (occ+daylight)
LVR	Lutron Vive integrated fixture sensor (radio only)
ELM	Enlighted micro sensor
OES	Osram SensiLUM
OEC	Osram Encelium CLM
OED	Osram CLM DEXAL
C110	Casambi (1x 010v)
C210	Casambi (2x 010v)
CRGBW	Casambi (RGBW)

DIMMING OPTIONS

Ordering Code	Description
D10V	0-10V Dimming, 1% power class
DLA2	Lutron Hi-lume 1% 2-lire LED driver (120V forward phase only)
DLEH5	Lutron Hi-lume 1% H EcoSystem LED driver with soft-On, Fade-to-Black
DALI	Digitally Addressable Lighting Interface
DIM	Custom Dimming. Please specify dimming manufacturer/model
TQ	Daintree® Networked Wireless Enabled for zonal control with WGZ100 (use with WOS3 ceiling sensor)
TS	Daintree® Networked Wireless Enabled with WFA100 adaptor for zonal control (use with WOS3 ceiling sensor)
TZ	Daintree® Networked Wireless with integrated WIZ20 sensor
TT	Daintree® EZ Connect Wireless with integrated WIZ20 sensor
T1	Daintree® One with integrated WIZ20 sensor with factory programmed preset*

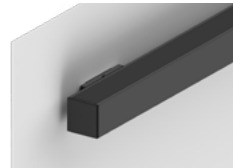
MOUNTING



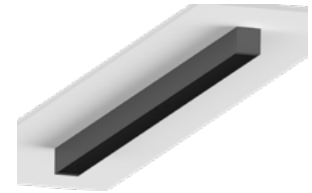
C
Cable Mount



H
Stem Mount



W
Wall Bracket Mount

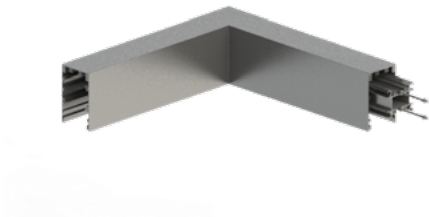


S
Surface Mount
(available in
SAD only)

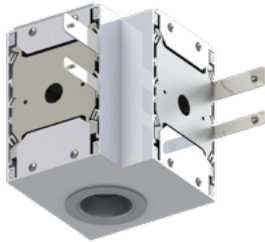
Components and Assembly

CORNER OPTIONS

* Custom angles available, up to 90°. Greater than 90°, consult factory.

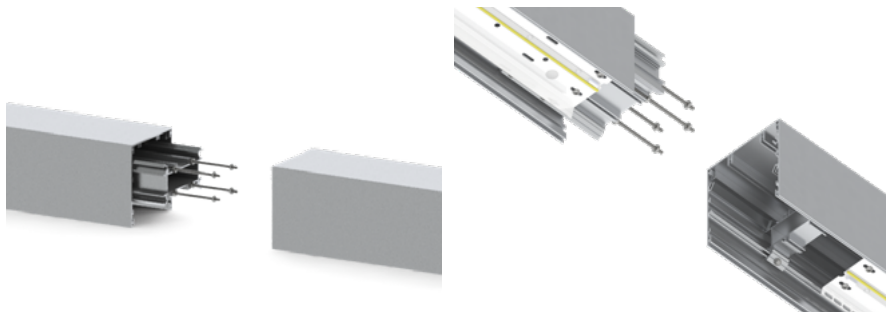


90°* CORNER



MR CORNER

JOINING HARDWARE (INCLUDED)



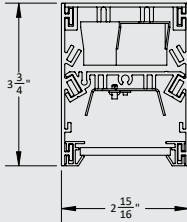
Cross Sectionals

ONYX3

3"W

Profile: 33
Options: ONXD, ONXU

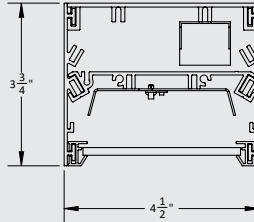
3"H



ONYX4

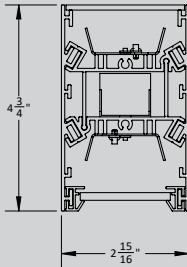
4"W

Profile: 34
Options: ONXD, ONXU

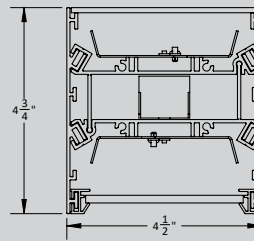


Profile: 43
Options: ONXD, ONXU, ONXUD

4"H

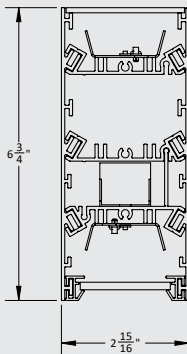


Profile: 44
Options: ONXD, ONXU, ONXUD

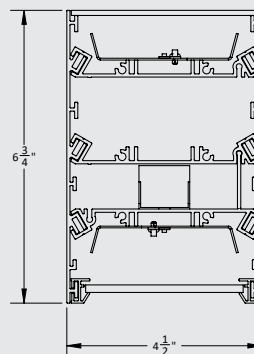


Profile: 63
Options: ONXD, ONXU, ONXUD

6"H



Profile: 64
Options: ONXD, ONXU, ONXUD



KEY

ONXD - DIRECT

ONXUD - DIRECT/INDIRECT

ONXU - INDIRECT

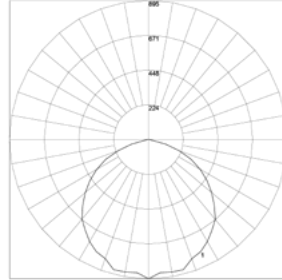
Photometrics

Direct 4"x 4"

650 lm/ft

2639 Lumens

ONXD-44-65LED40-BOL-C X 4'-UNV-BK-D10V



Maximum Candela = 895.07 Located At Horizontal Angle = 0, Vertical Angle = 5 # 1 - Vertical Plane Through Horizontal Angles (90 - 270)

ZONE	LUMENS	% OF FIXTURE
0-20	326.41	12.40
0-30	699.57	26.50
0-40	1155.67	43.80
0-60	2084.31	79.00
0-80	2604.53	98.70
0-90	2638.57	100.00
10-90	2554.80	96.80
20-40	829.27	31.40
20-50	1312.47	49.70
40-70	1269.14	48.10
60-80	520.22	19.70
70-80	179.72	6.80
80-90	34.04	1.30
90-110	0.00	0.00
90-120	0.00	0.00
90-130	0.00	0.00
90-150	0.00	0.00
90-180	0.00	0.00
110-180	0.00	0.00
0-180	2638.57	100.00

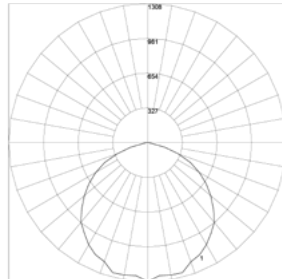
ZONE	LUMENS
0-10	83.78
10-20	242.63
20-30	373.17
30-40	456.10
40-50	483.20
50-60	445.43
60-70	340.50
70-80	179.72
80-90	34.04
90-100	0.00
100-110	0.00
110-120	0.00
120-130	0.00
130-140	0.00
140-150	0.00
150-160	0.00
160-170	0.00
170-180	0.00

Direct 4"x 4"

950 lm/ft

3856 Lumens

ONXD-44-95LED40-BOL-C X 4'-UNV-BK-D10V



Maximum Candela = 1308.18 Located At Horizontal Angle = 0, Vertical Angle = 5 # 1 - Vertical Plane Through Horizontal Angles (90 - 270)

ZONE	LUMENS	% OF FIXTURE
0-20	477.05	12.40
0-30	1022.45	26.50
0-40	1689.06	43.80
0-60	3046.30	79.00
0-80	3806.63	98.70
0-90	3856.38	100.00
10-90	3733.94	96.80
20-40	1212.01	31.40
20-50	1918.23	49.70
40-70	1854.90	48.10
60-80	760.33	19.70
70-80	262.67	6.80
80-90	49.75	1.30
90-110	0.00	0.00
90-120	0.00	0.00
90-130	0.00	0.00
90-150	0.00	0.00
90-180	0.00	0.00
110-180	0.00	0.00
0-180	3856.38	100.00

ZONE	LUMENS
0-10	122.44
10-20	354.61
20-30	545.40
30-40	666.61
40-50	706.22
50-60	651.02
60-70	497.66
70-80	262.67
80-90	49.75
90-100	0.00
100-110	0.00
110-120	0.00
120-130	0.00
130-140	0.00
140-150	0.00
150-160	0.00
160-170	0.00
170-180	0.00

CONSTRUCTION

Housing:	Extruded aluminum, machined endcaps
Lens:	Direct: Forum Onyx black-out pigmented lens Indirect: Clear frosted acrylic, Satin acrylic, white opal acrylic, or bat wing options available.
Optical Assembly:	92% reflective pre-coated aluminum reflector system
Paint:	Matte Black
Weight:	3-4 lb/ft

OPTICAL SYSTEM

Lumens:	50-1100 lm/ft
Distribution:	Direct (ONXD), Indirect (ONXU), and Direct/Indirect (ONXUD)
Efficacy:	~44 LPW *Includes transmission factor
Wattage:	~1.14-25 W/ft
CCT:	2700k, 3000K, 3500K, 4000K, 5000K
CRI (Min):	TriGain® 90CRI
R9 (Min):	>80 R9 achievable with TriGain Technology consult factory for all options
Color Consistency:	3 SDCM

ELECTRICAL

Input Voltage:	120V-277V (Universal), 347V
Input Frequency:	50/60Hz
Power Factor (PF):	>95% at max load
Total Harmonic Distortion (THD):	<20% at max load

CONTROLS

Dimming:	0-10V 1% power class; Daintree Wireless Controls; Lutron Hi-lume 1% 2-wire LED driver; Lutron Hi-lume 1%-H EcoSystem LED driver with soft-On Fade-to-Black; Lutron 5-Series EcoSystem LED driver; Digitally Addressable Lighting Interface; Custom Dimming
-----------------	--

AMBIENT TEMPERATURE

Product ID	Operating Temperature
ONYX	-30°C - 25°C

LUMEN MAINTENANCE

- L70>50K Hours

MOUNTING

- C - Cable Mount
- H - Stem Mount
- W - Wall Bracket Mount
- S - Surface Mount (available in SAD only)

DESIGN LIFE & WARRANTY

Warranty:

- LED boards - 5 years
- LED drivers (standard) - 5 years
- LED drivers (Lutron) - 3 years